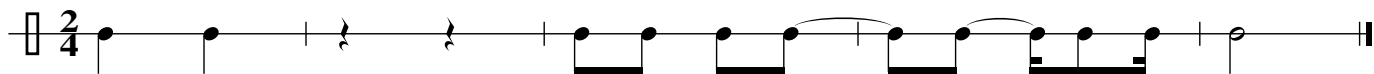
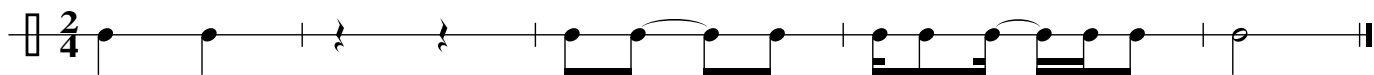


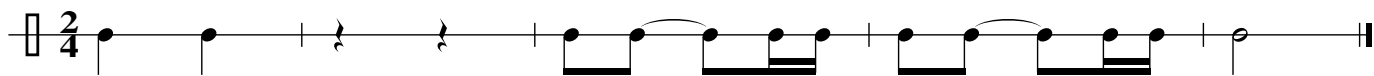
Exercise 1



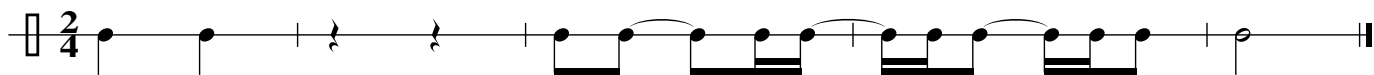
Exercise 2



Exercise 3



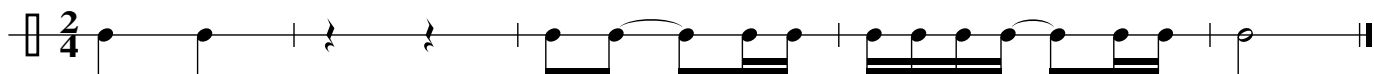
Exercise 4



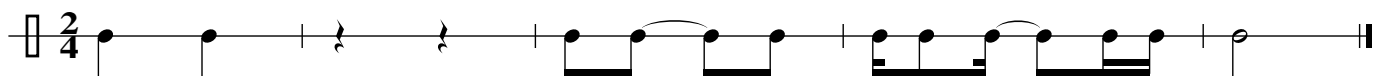
Exercise 5



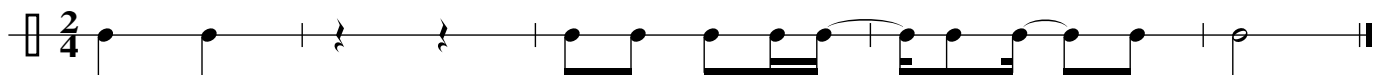
Exercise 6



Exercise 7



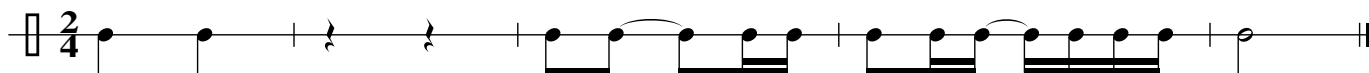
Exercise 8



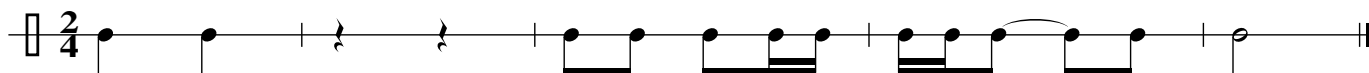
Exercise 9



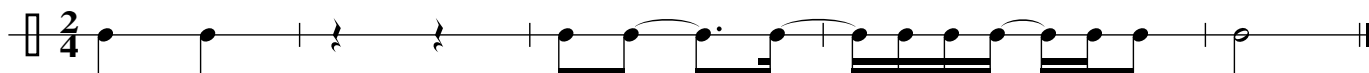
Exercise 10



Exercise 11



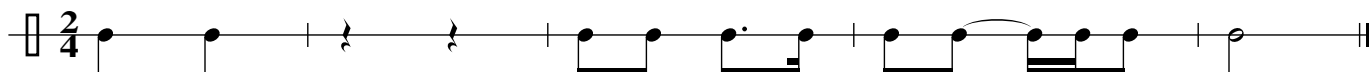
Exercise 12



Exercise 13



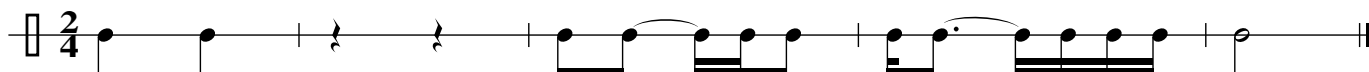
Exercise 14



Exercise 15



Exercise 16



The first staff of music is in 2/4 time. It begins with a quarter note on G4, followed by a quarter note on A4. After a bar line, there are two eighth rests. Following another bar line, there is a quarter note on G4, a quarter note on A4, a quarter note on B4, and a quarter note on A4. A slur covers the next two measures: the first contains a quarter note on G4 and a quarter note on A4; the second contains a quarter note on B4 and a quarter note on A4. After a bar line, there is a quarter note on G4, a quarter note on A4, a quarter note on B4, and a quarter note on A4. A slur covers the next two measures: the first contains a quarter note on G4 and a quarter note on A4; the second contains a quarter note on B4 and a quarter note on A4. The staff ends with a half note on G4 and a double bar line.

The first staff of music is in 2/4 time. It begins with a quarter note on G4, followed by a quarter note on A4. After a bar line, there are two eighth rests. Following another bar line, there is a quarter note on G4, a quarter note on A4, a quarter note on B4, and a quarter note on A4. After a bar line, there is a quarter note on G4, a quarter note on A4, a quarter note on B4, and a quarter note on A4. The staff ends with a quarter note on G4.

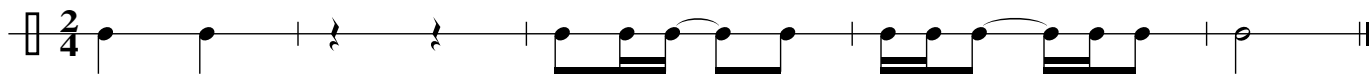
The first staff of music is in 2/4 time. It begins with a quarter note on G4, followed by a quarter note on A4. After a bar line, there are two eighth rests. Following another bar line, there is a quarter note on G4, a quarter note on A4, a quarter note on B4, and a quarter note on A4. After a bar line, there is a quarter note on G4, a quarter note on A4, a quarter note on B4, and a quarter note on A4. After a bar line, there is a quarter note on G4, a quarter note on A4, a quarter note on B4, and a quarter note on A4. The staff ends with a quarter note on G4.

[illegible][illegible]

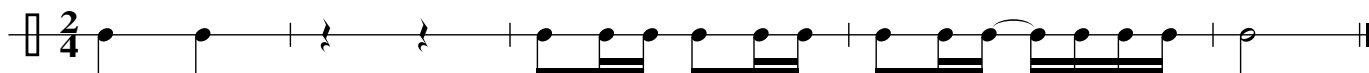
The first staff of music is in 2/4 time. It begins with a quarter note, followed by a quarter rest, then a quarter note, and another quarter rest. This is followed by a half note, then a half note, then a quarter note, and finally a quarter rest. The staff ends with a double bar line.

[illegible][illegible]

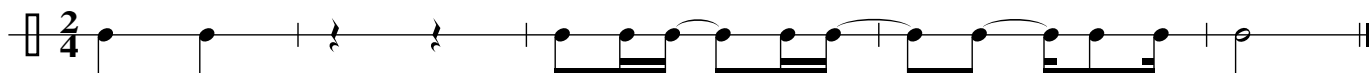
Exercise 41



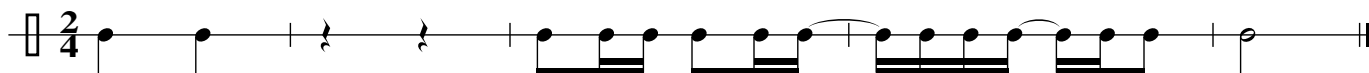
Exercise 42



Exercise 43



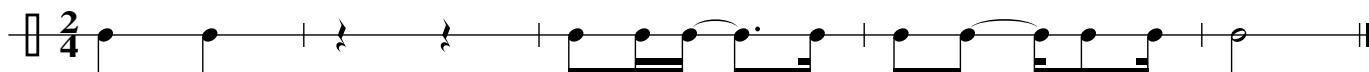
Exercise 44



Exercise 45



Exercise 46



Exercise 47



Exercise 48



The first staff of music is in 2/4 time. It begins with a quarter note on G4, followed by a quarter note on A4. After a bar line, there are two eighth rests. Following another bar line, there is a quarter note on G4, a quarter note on A4, and a quarter note on B4. This is followed by a quarter note on A4, a quarter note on G4, and a quarter note on F#4. A slur covers the next two notes: a quarter note on E4 and a quarter note on D4. Another slur covers the final two notes of the staff: a quarter note on C4 and a half note on B3.

The first staff of music is in 2/4 time. It begins with a quarter rest, followed by a quarter note, a half note, and a quarter rest. The next measure contains a quarter note, a quarter note, and a quarter rest. The third measure contains a quarter note, a quarter note, and a quarter rest. The fourth measure contains a quarter note, a quarter note, and a quarter rest. The fifth measure contains a quarter note, a quarter note, and a quarter rest. The sixth measure contains a quarter note, a quarter note, and a quarter rest. The seventh measure contains a quarter note, a quarter note, and a quarter rest. The eighth measure contains a quarter note, a quarter note, and a quarter rest. The piece ends with a double bar line.

The first staff of music is in 2/4 time. It begins with a quarter note, followed by a quarter rest, then an eighth note, and another eighth rest. This is followed by a quarter note, a quarter note, and a quarter note. The next measure contains a quarter note, a quarter note, and a quarter note. The final measure of the staff contains a quarter note, a quarter note, and a quarter note.

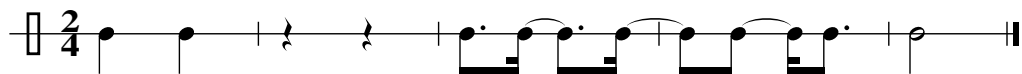
The first staff of music is in 2/4 time. It begins with a quarter note on G4, followed by a quarter note on A4. After a bar line, there are two eighth rests. Following another bar line, there is a beamed eighth-note pair (G4, A4), followed by a quarter note on B4, a beamed eighth-note pair (A4, G4), and a quarter note on F#4. After a bar line, there is a beamed eighth-note pair (E4, D4), followed by a quarter note on C4, a beamed eighth-note pair (B3, A3), and a quarter note on G3. The staff ends with a double bar line.

[illegible]

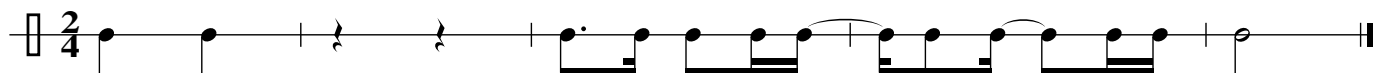
The first staff of music is in 2/4 time. It begins with a quarter note, followed by a quarter rest, then a quarter note, and another quarter rest. This is followed by a half note, then a half note, then a quarter note, and finally a quarter note. The staff ends with a double bar line.

The first staff of music is in 2/4 time. It begins with a quarter rest, followed by a quarter note, a half note, and a quarter rest. The next measure contains a quarter note, a half note, and a quarter note. The third measure features a quarter note, a half note, and a quarter note, with a slur over the last two notes. The fourth measure contains a quarter note, a half note, and a quarter note, also with a slur over the last two notes. The piece concludes with a final quarter note.

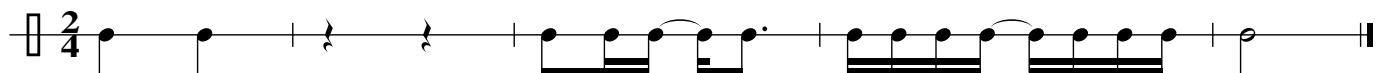
Exercise 73



Exercise 74



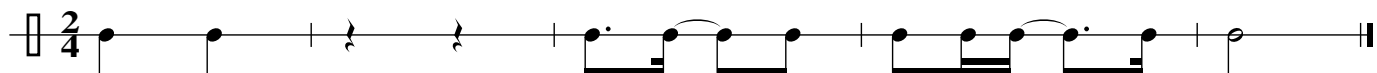
Exercise 75



Exercise 76



Exercise 77



Exercise 78



Exercise 79



Exercise 80

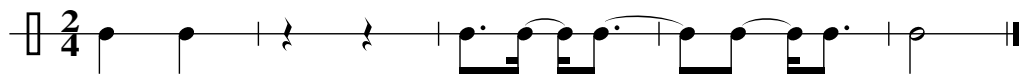


The musical notation for Example 6-10 consists of a single staff with a key signature of one flat (B-flat) and a time signature of 2/4. The melody begins with a quarter rest, followed by two eighth rests. It then features a series of eighth and sixteenth notes, including some beamed pairs and a dotted half note at the end.

The first staff of music is in 2/4 time. It begins with a quarter note on G4, followed by a quarter note on A4. After a bar line, there are two eighth rests. Following another bar line, there is a dotted quarter note on G4, an eighth note on A4, a quarter note on B4, and a quarter note on A4. This is followed by a half note on G4. After a bar line, there is a quarter note on F#4, a quarter note on E4, a quarter note on D4, and a quarter note on C4. The staff ends with a double bar line.

The first staff of music is in 2/4 time. It begins with a quarter note on G4, followed by a quarter note on A4. There is a half rest, then a quarter note on G4. This is followed by a quarter note on F#4, which is beamed to a quarter note on E4. Then, a quarter note on D4 is beamed to a quarter note on C4. Next, a quarter note on B3 is beamed to a quarter note on A3. This is followed by a quarter note on G3, which is beamed to a quarter note on F3. The staff ends with a half note on E3.

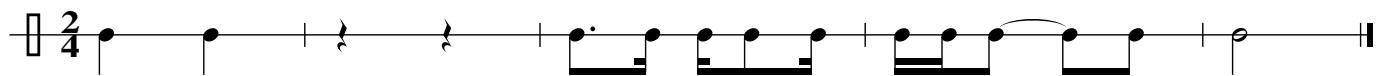
Exercise 97



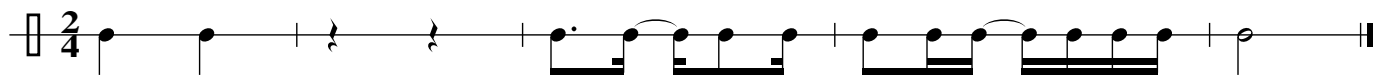
Exercise 98



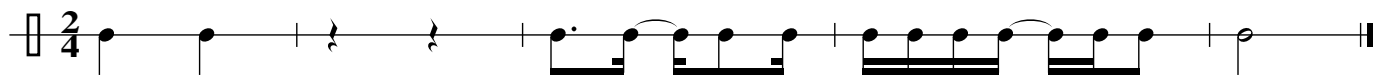
Exercise 99



Exercise 100



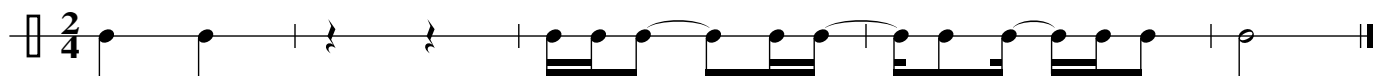
Exercise 101



Exercise 102



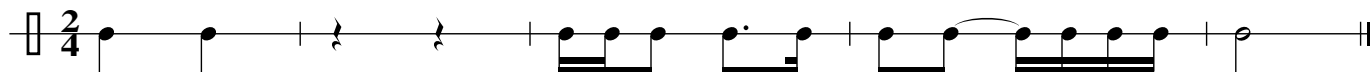
Exercise 103



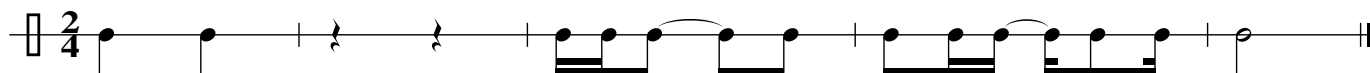
Exercise 104



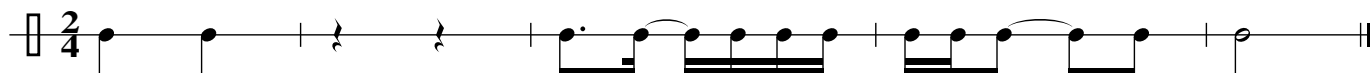
Exercise 105



Exercise 106



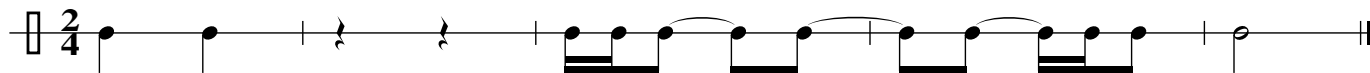
Exercise 107



Exercise 108



Exercise 109



Exercise 110



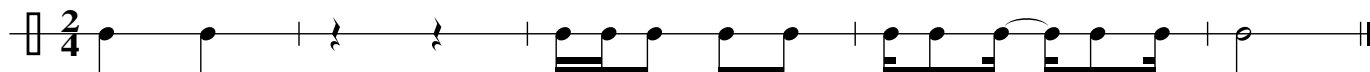
Exercise 111



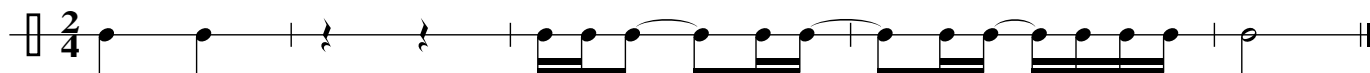
Exercise 112



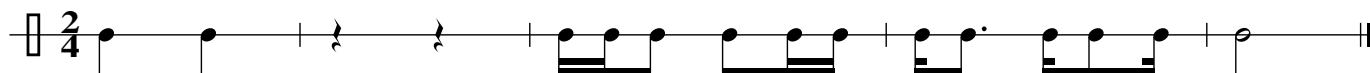
Exercise 113



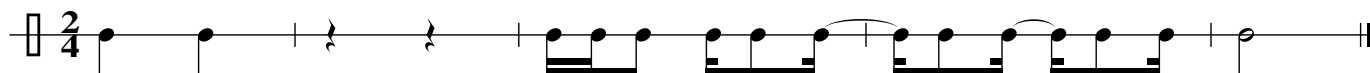
Exercise 114



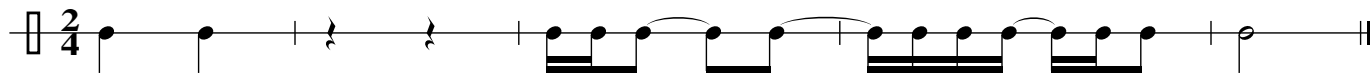
Exercise 115



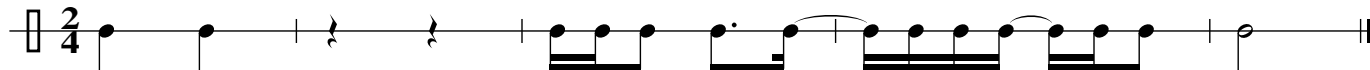
Exercise 116



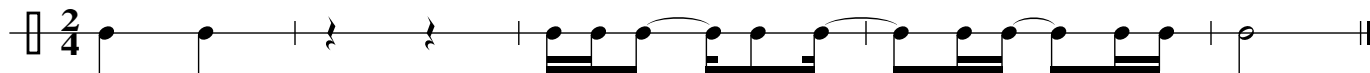
Exercise 117



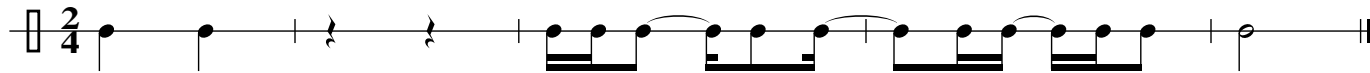
Exercise 118



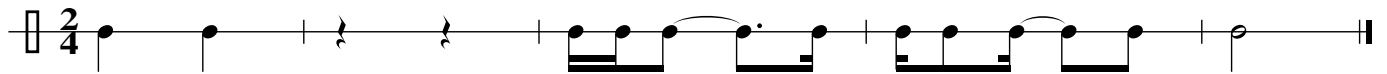
Exercise 119



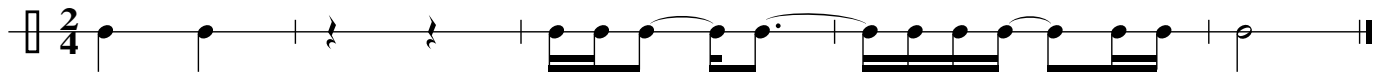
Exercise 120



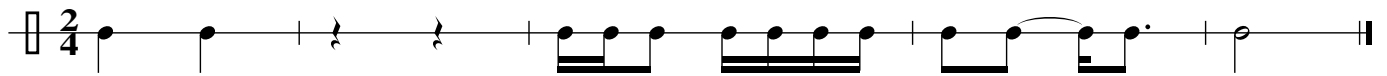
Exercise 121



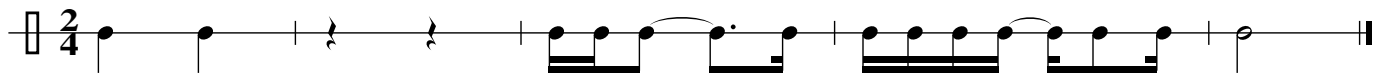
Exercise 122



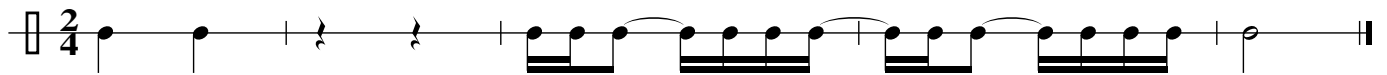
Exercise 123



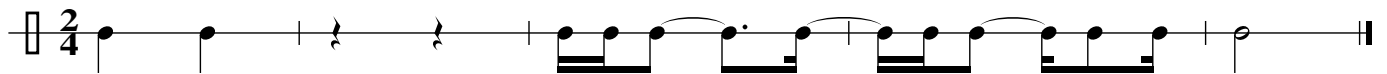
Exercise 124



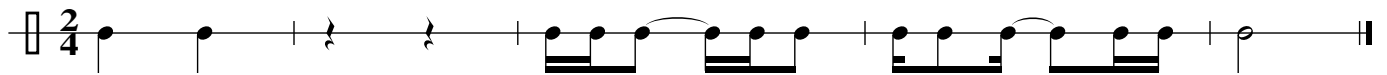
Exercise 125



Exercise 126



Exercise 127



Exercise 128



Exercise 129



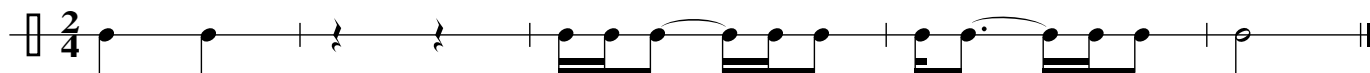
Exercise 130



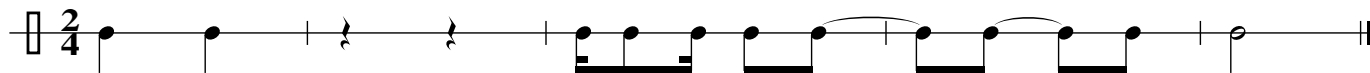
Exercise 131



Exercise 132



Exercise 133



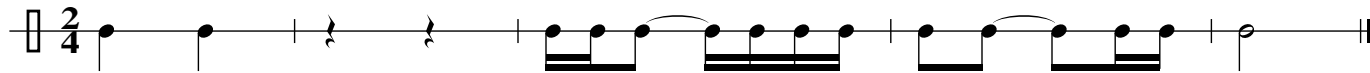
Exercise 134



Exercise 135



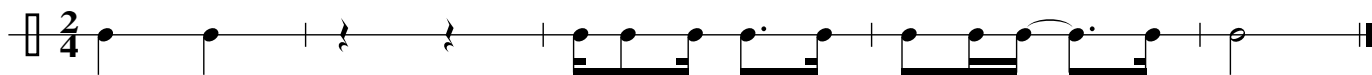
Exercise 136



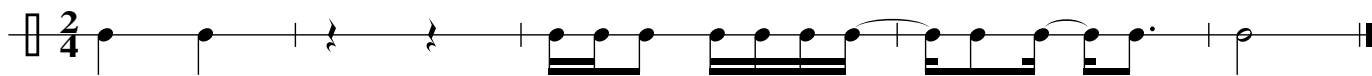
Exercise 137



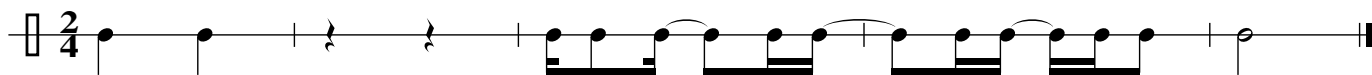
Exercise 138



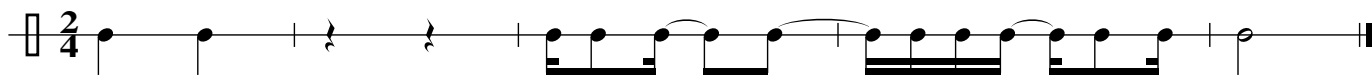
Exercise 139



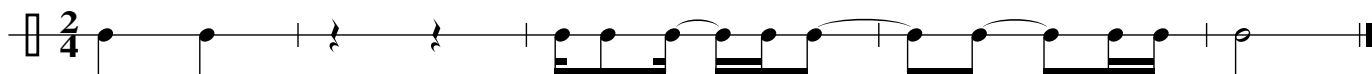
Exercise 140



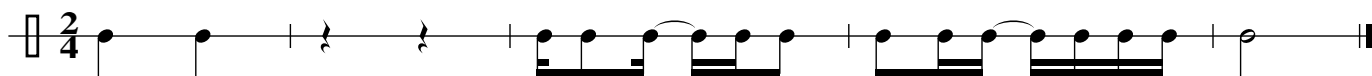
Exercise 141



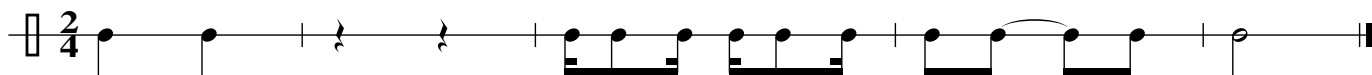
Exercise 142



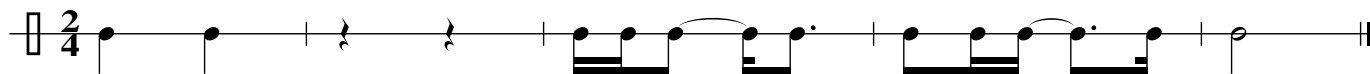
Exercise 143



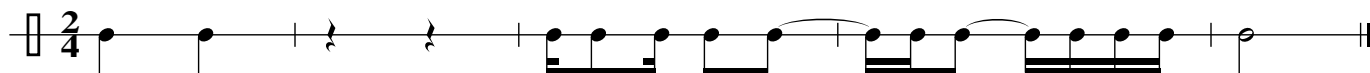
Exercise 144



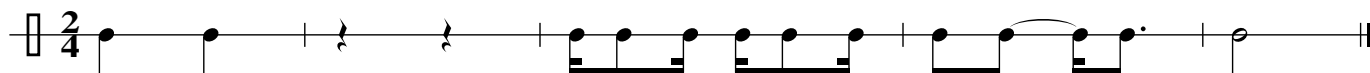
Exercise 145



Exercise 146



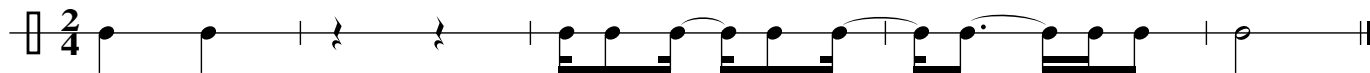
Exercise 147



Exercise 148



Exercise 149



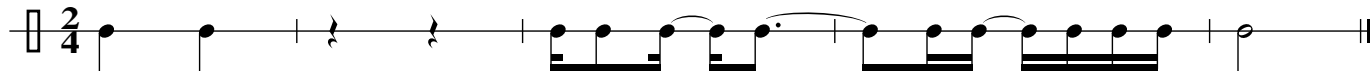
Exercise 150



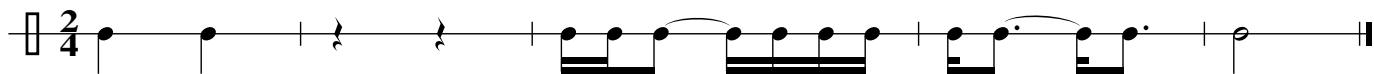
Exercise 151



Exercise 152



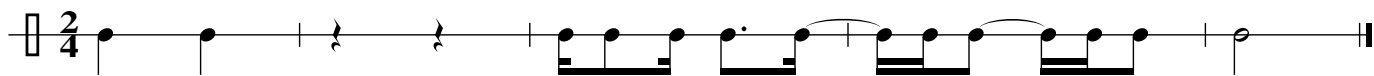
Exercise 153



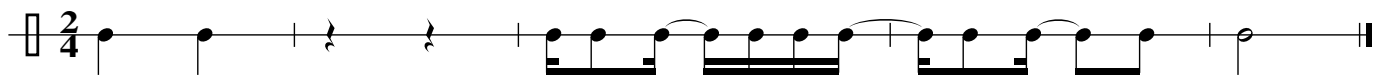
Exercise 154



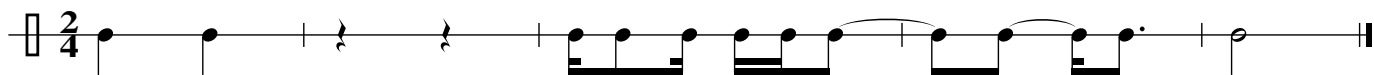
Exercise 155



Exercise 156



Exercise 157



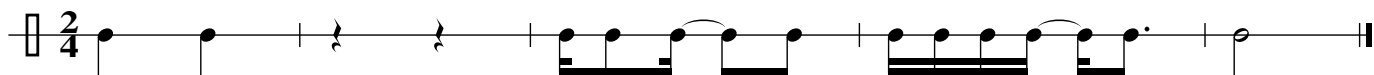
Exercise 158



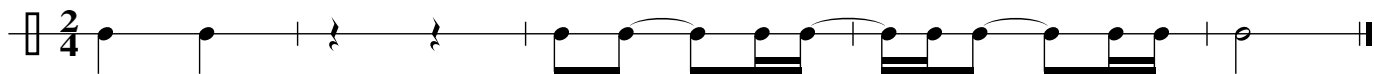
Exercise 159



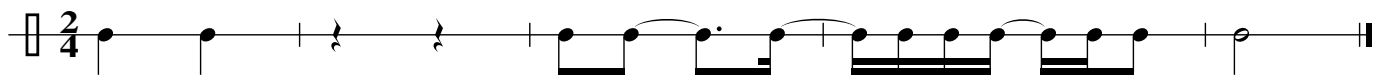
Exercise 160



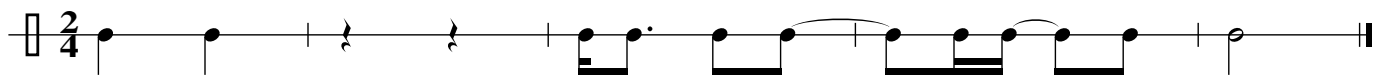
Exercise 161



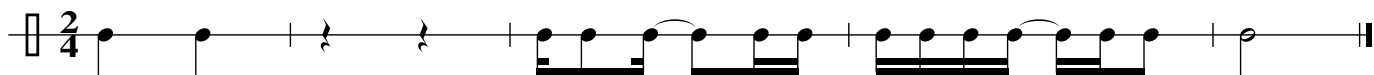
Exercise 162



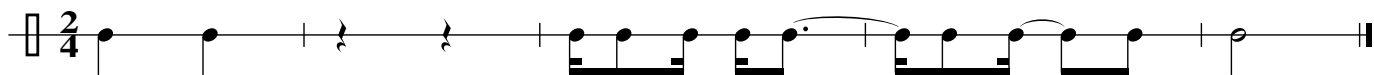
Exercise 163



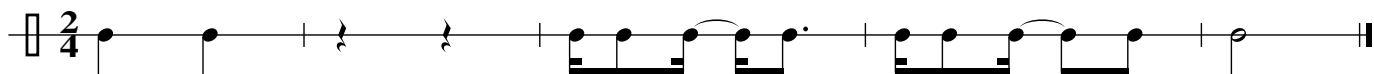
Exercise 164



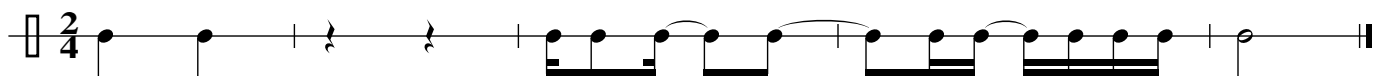
Exercise 165



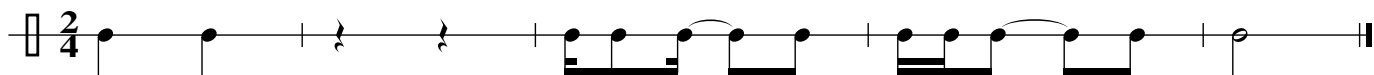
Exercise 166



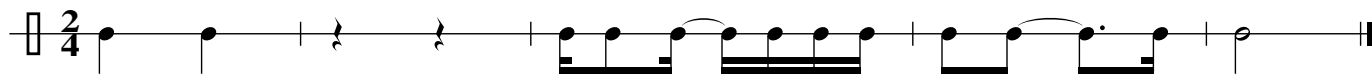
Exercise 167



Exercise 168



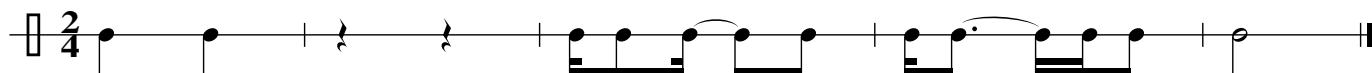
Exercise 169



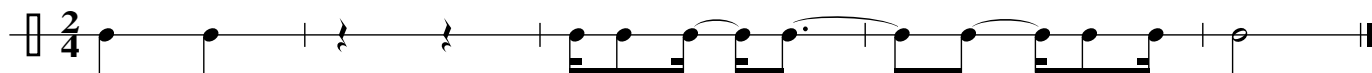
Exercise 170



Exercise 171



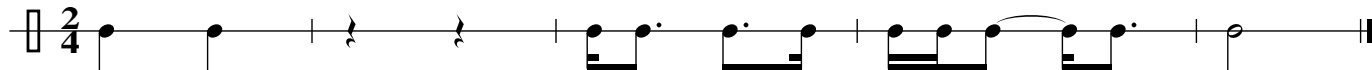
Exercise 172



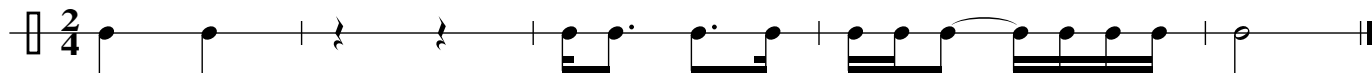
Exercise 173



Exercise 174



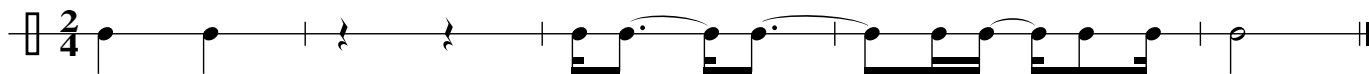
Exercise 175



Exercise 176



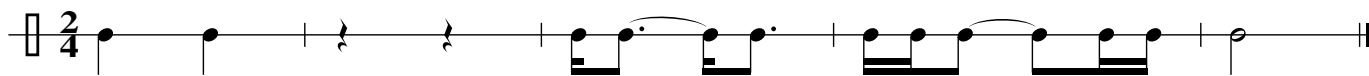
Exercise 177



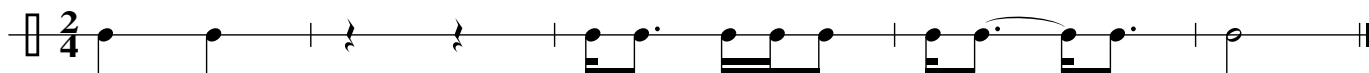
Exercise 178



Exercise 179



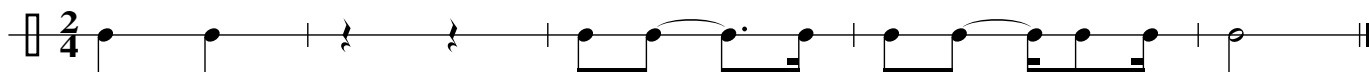
Exercise 180



Exercise 181



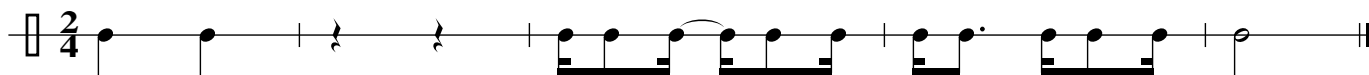
Exercise 182



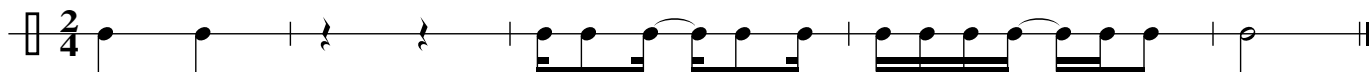
Exercise 183



Exercise 184



Exercise 185



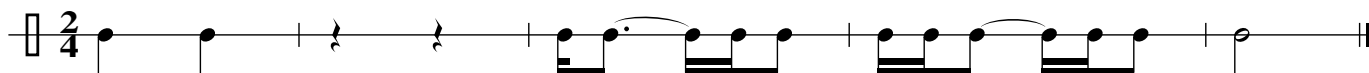
Exercise 186



Exercise 187



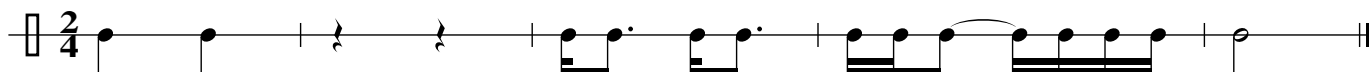
Exercise 188



Exercise 189



Exercise 190



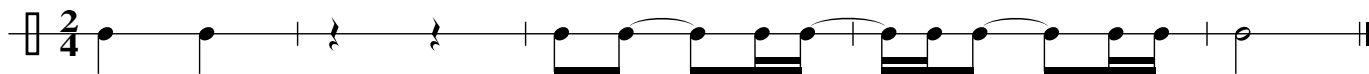
Exercise 191



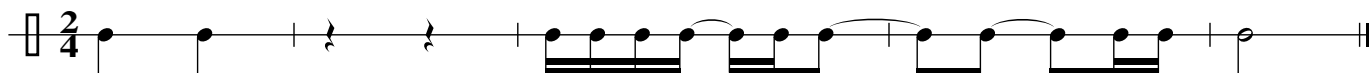
Exercise 192



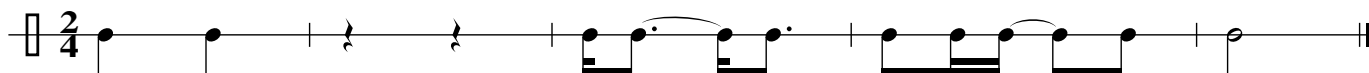
Exercise 193



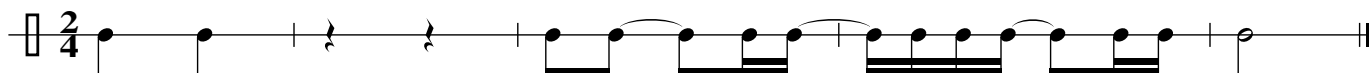
Exercise 194



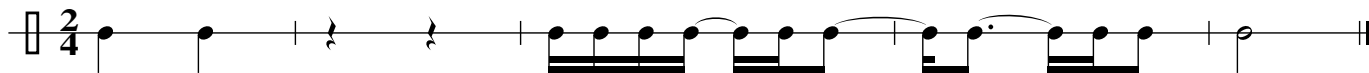
Exercise 195



Exercise 196



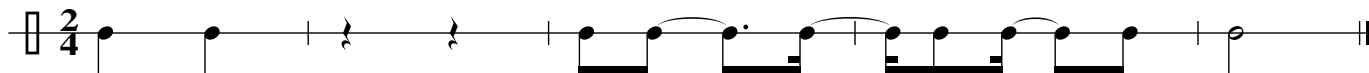
Exercise 197



Exercise 198



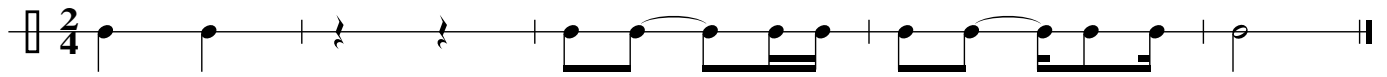
Exercise 199



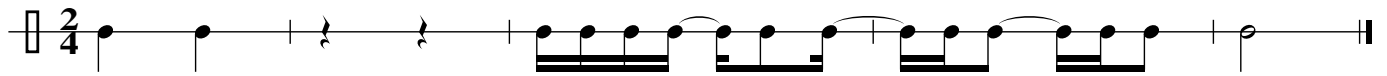
Exercise 200



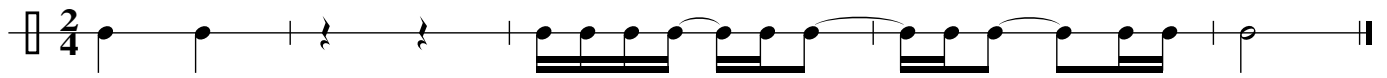
Exercise 201



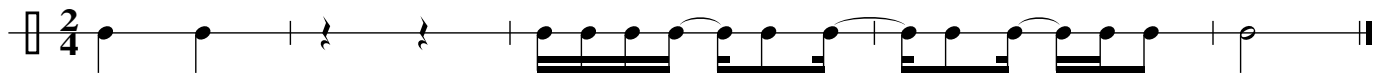
Exercise 202



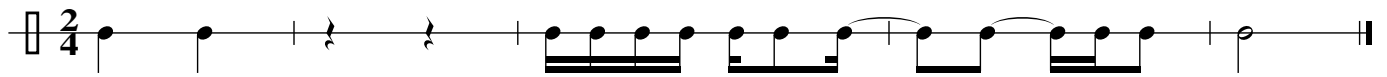
Exercise 203



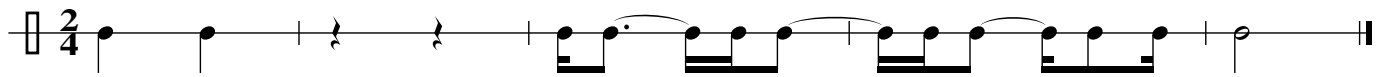
Exercise 204



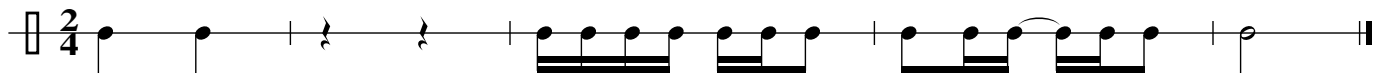
Exercise 205



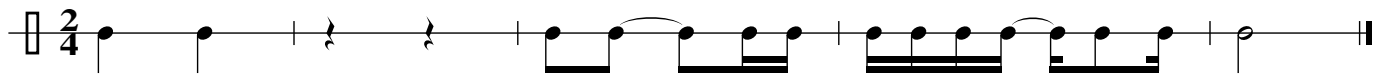
Exercise 206



Exercise 207



Exercise 208



Exercise 209



Exercise 210



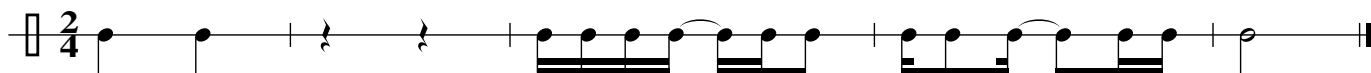
Exercise 211



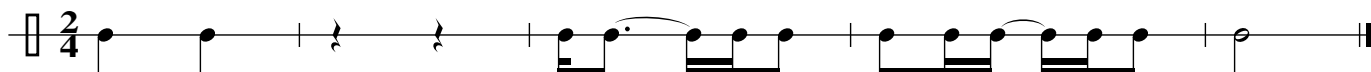
Exercise 212



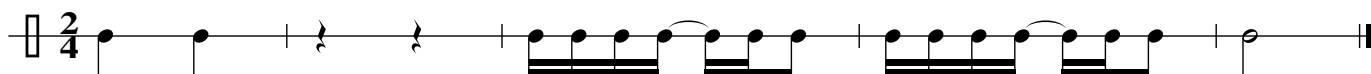
Exercise 213



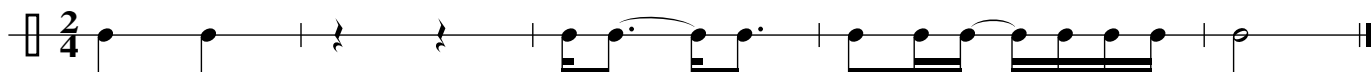
Exercise 214



Exercise 215



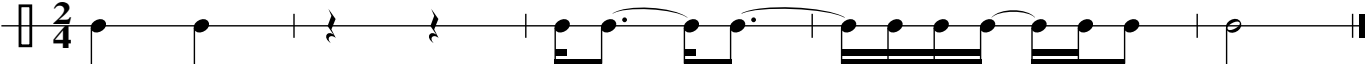
Exercise 216



Exercise 217



Exercise 218



Exercise 219



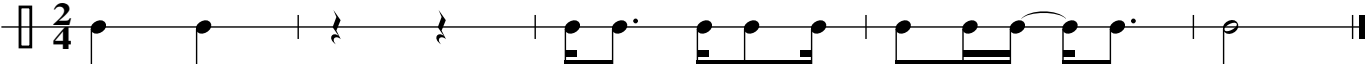
Exercise 220



Exercise 221



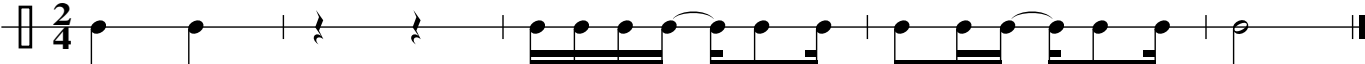
Exercise 222



Exercise 224



Exercise 225



Exercise 226



Exercise 227



Exercise 228



Exercise 230



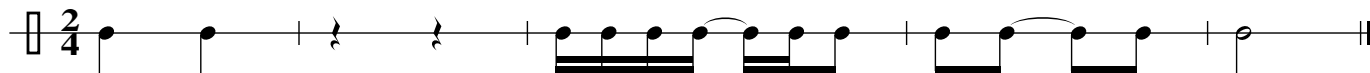
Exercise 231



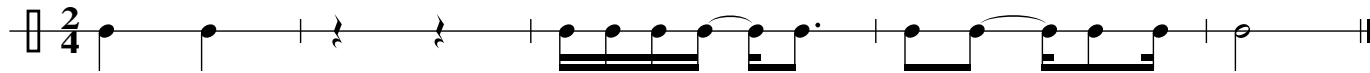
Exercise 232



Exercise 234



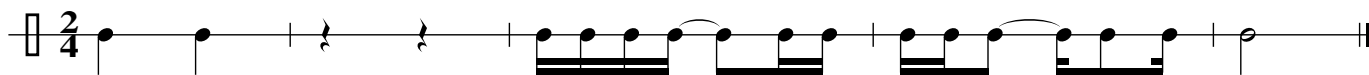
Exercise 236



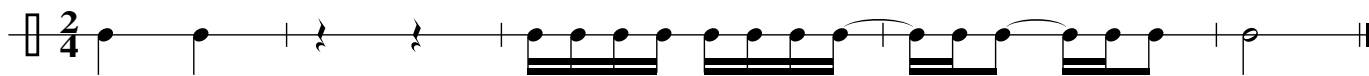
Exercise 238



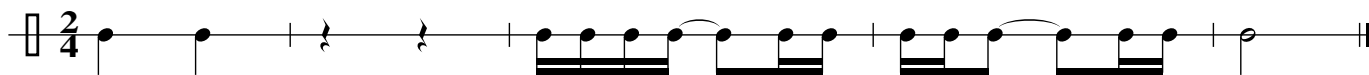
Exercise 242



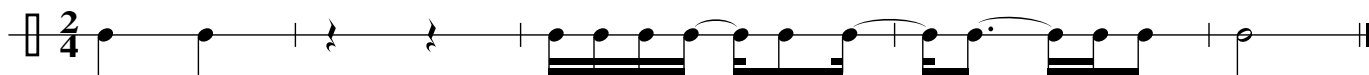
Exercise 243



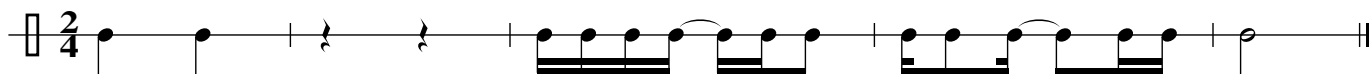
Exercise 244



Exercise 246



Exercise 248



Exercise 250

